

# CLAYGROUND

RESEARCH, PRODUCTION AND LEARNING HUB



# CONTENTS

## SITE ANALYSIS

- 01 CHARACTERISTICS
- 02 ACTIVITY
- 03 RESPONSE

## MANIFESTO

- 04 BRIEF
- 05 BUILDING COMMUNITY

## DEVELOPMENT

- 06 ADAPTION OF EXISTING
- 07 MASSING DEVELOPMENT
- 08 VITOSE FACTORY PRECEDENT
- 09 VISUALISING INTERIORS

## FINAL DESIGN

- 10 SITE OVERVIEW MODEL
- 11 GROUND FLOOR PLAN
- 12 INTERIOR MODEL
- 13 FOOD HALL VISUAL

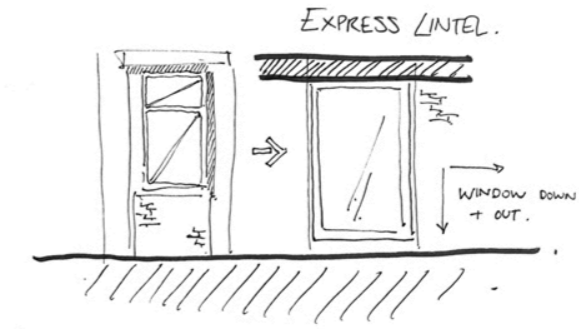
- 14 PRODUCTION WORKSHOP VISUAL
- 15 FIRST FLOOR PLAN
- 16 PUBLIC WORKSHOP VISUAL
- 17 ROOF PLAN
- 18 SECTION
- 19 ENVIRONMENTAL STRATEGY
- 20 FACADE DEVELOPMENT
- 21 MATERIALITY DEVELOPMENT
- 22 FINAL ELEVATIONS
- 24 TECHNICAL DETAIL
- 25 SITE OVERVIEW WITH SEMESTER 1
- 26 MODELS
- 27 EXTERIOR PERSPECTIVES



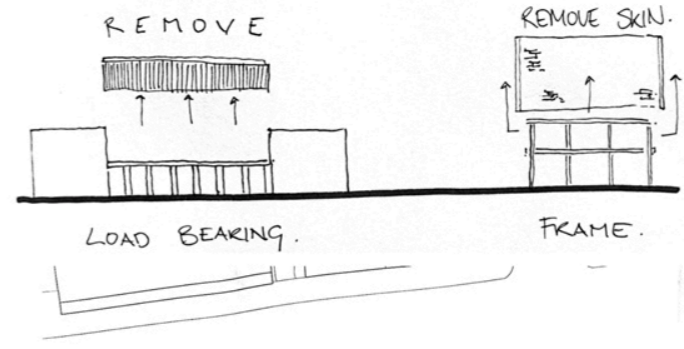
# SITE CHARACTERISTICS



DEFENSIVE



KEEP COLONADE



# SITE ACTIVITY

CREATIVE ATMOSPHERE

HEART OF STUDENT LIFE - CAN FOOD HALL BE USED AS A PLACE TO STUDY?

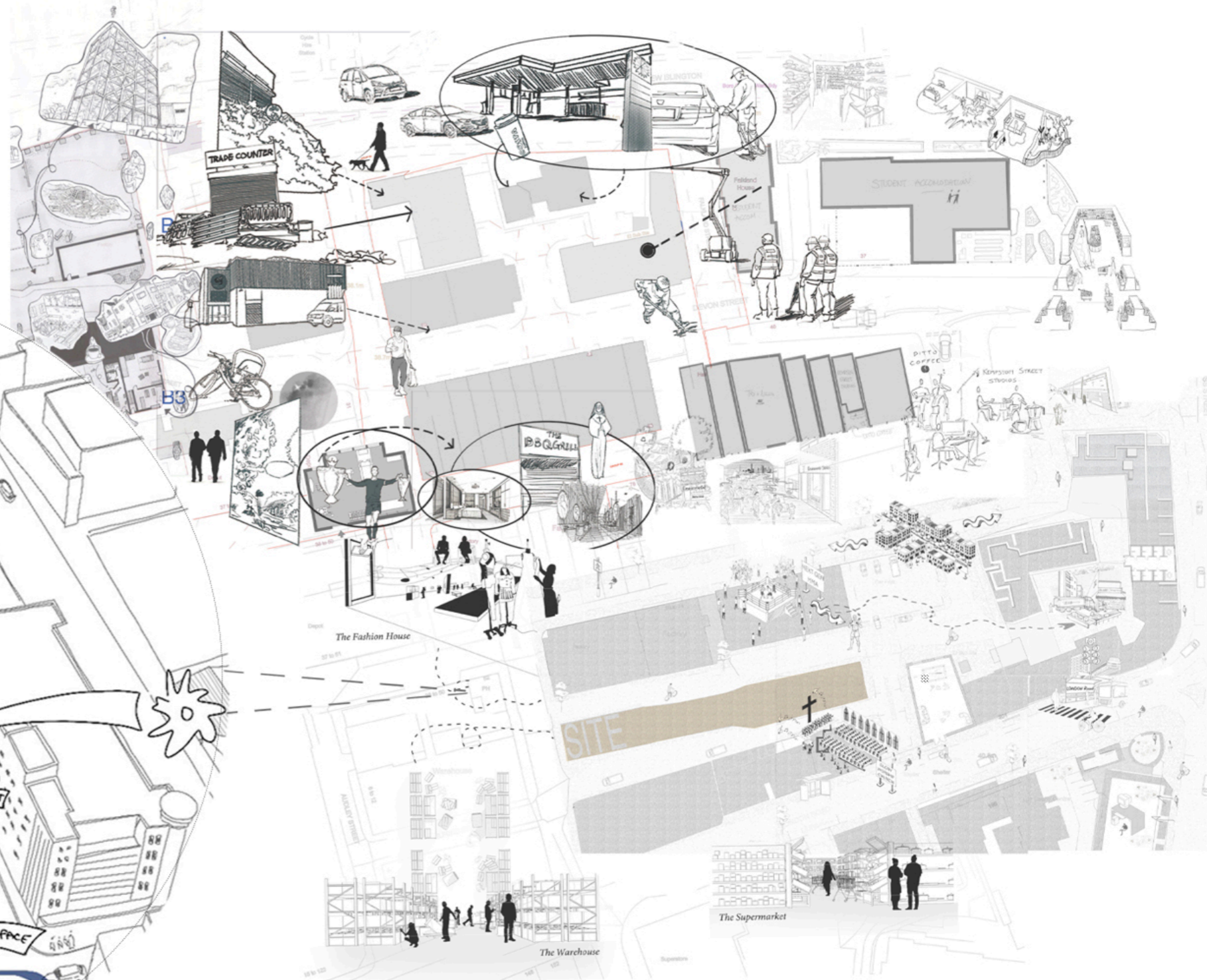
COMMUTERS PASSING THROUGH

QUITE QUIET OUTSIDE DUE TO LACK OF PUBLIC REALM AND PLEASANT SPACES

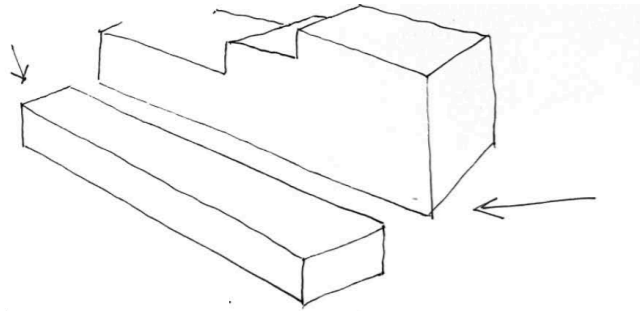
CREATE AN URBAN JOURNEY THROUGH THE SITE

BAR OPPOSITE SITE COULD BE REFERENCED IN DESIGN

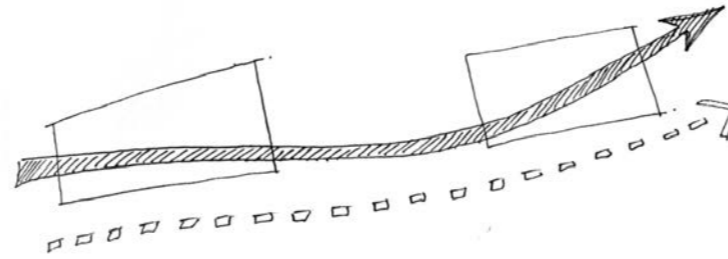
BOTH ENDS OF THE SITE SHOULD BECOME PUBLIC ENTRANCES



# SITE RESPONSE



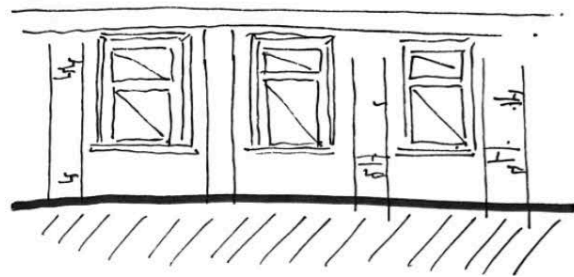
HIGH NEIGHBOURING BUILDINGS; DIRECT SUNLIGHT IS BLOCKED



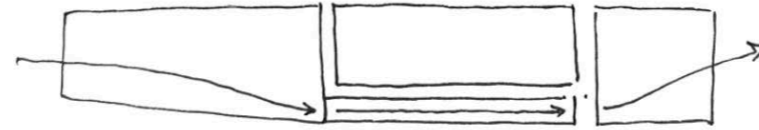
CREATE NEW URBAN ROUTE THROUGH SITE, RELATE JOURNEY TO CONTEXT



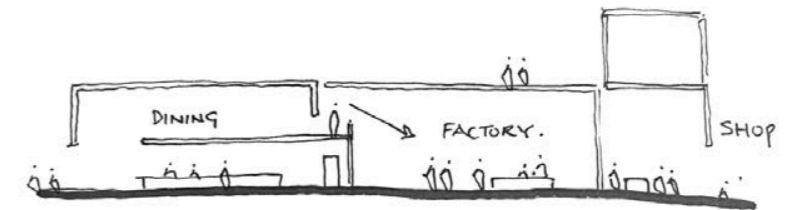
TWO PUBLIC FRONTS BOOKEND THE SITE  
THIS LENDS ITSELF TO PRIVATE PRODUCTION IN THE CENTRE SPACE



CLEAR COLONNADE LANGUAGE TO MATCH EXISTING



CLEAR PHYSICAL DIVISION BETWEEN PUBLIC AND FACTORY, STOP  
PUBLIC WALKING INTO FACTORY SPACE ACCIDENTALLY

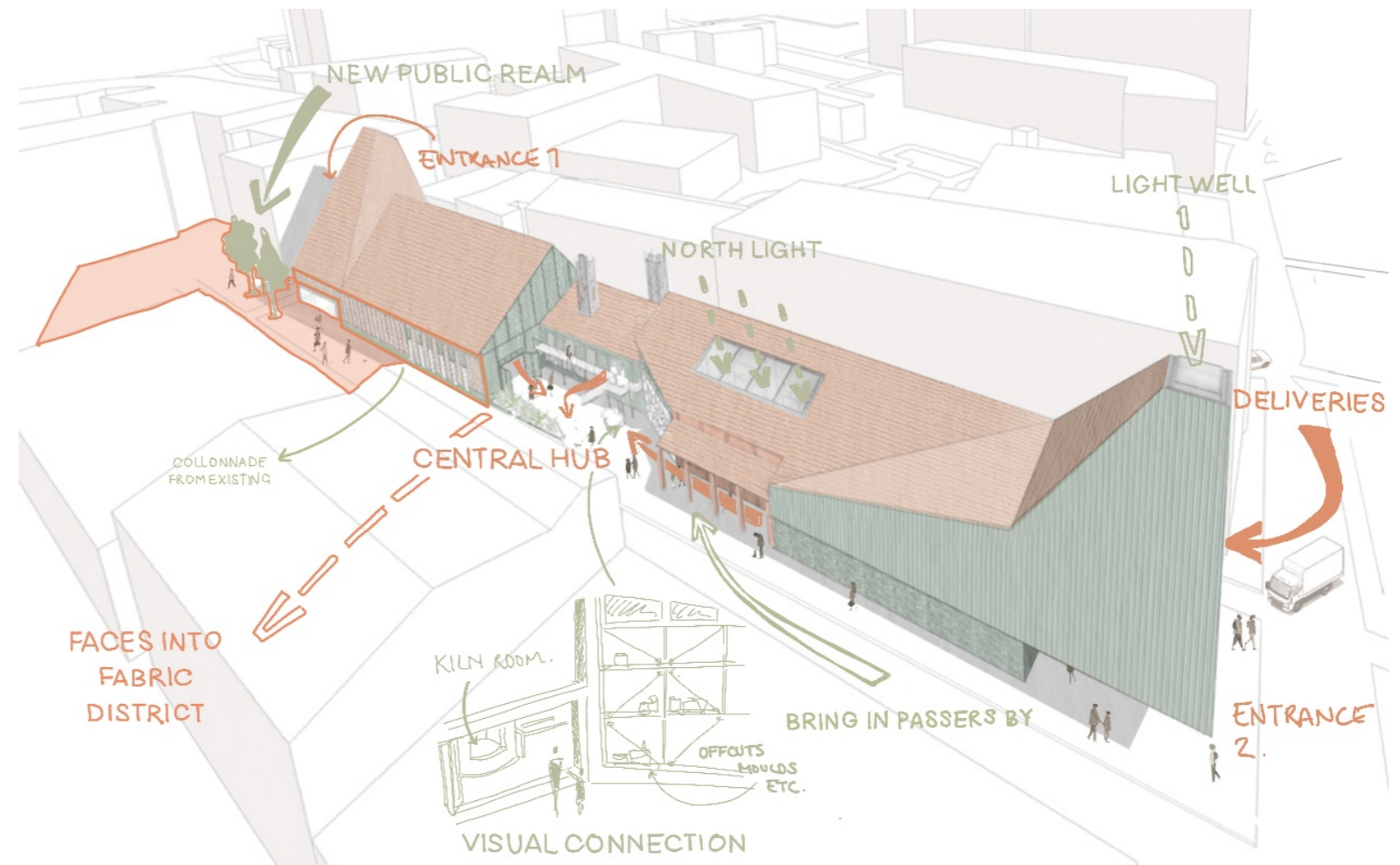


VISUAL CONNECTION BETWEEN PRIVATE AND PUBLIC

BASED ON THE FINDINGS AT THE SITE; FLOW OF PEOPLE, FORM OF CONTEXT AND ENVIRONMENTAL CONDITIONS THESE ARE THE DESIGN RESPONSES THAT SHOULD BE REFERENCED WHEN TAKING THE DESIGN FURTHER.

THE IMAGE ON THE RIGHT DEPICTS HOW THESE ELEMENTS HAVE BEEN ADDRESSED IN THE FINAL DESIGN.

THE SITE WILL CREATE A ZONE OF THE FABRIC DISTRICT. INCREASING COMMUNITY ATMOSPHERE AND CREATING A PLACE TO BE FOR WORKING, MEETING AND LEARNING.



# BRIEF

THE FABRIC DISTRICT IS IN NEED OF A COMMUNITY ATMOSPHERE, A PLACE TO MEET, LEARN AND WORK. FOR THIS REASON, THIS PROJECT WILL HOUSE A SMALL SCALE CERAMICS PRODUCTION FACILITY, A FOOD HALL WITH VENDORS CHANGING REGULARLY TO PROVIDE FOR SMALL BUSINESSES AND SMALLER TEACHING WORKSHOPS FOR PUBLIC USE. THE SITE WILL ALSO ACT AS A HUB FOR LOCAL CERAMICS BUSINESSES TO USE THE SPACE AND COLLABORATE WITH OTHERS.



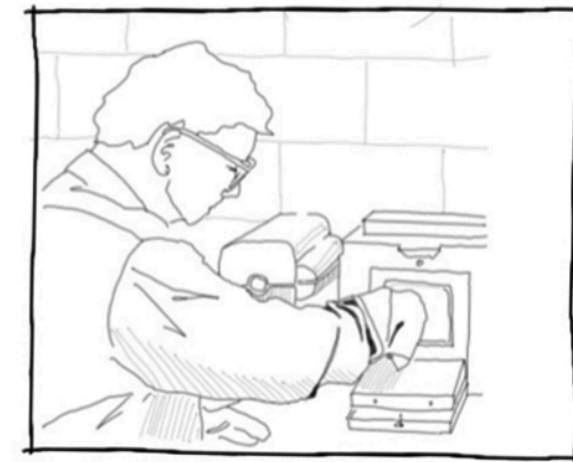
WORKSHOPS



WORKING ATMOSPHERE



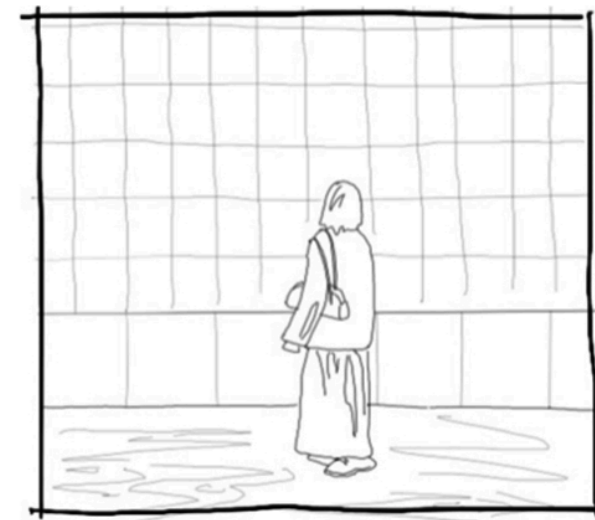
SMALL SCALE PRODUCTION



CERAMIC LABS



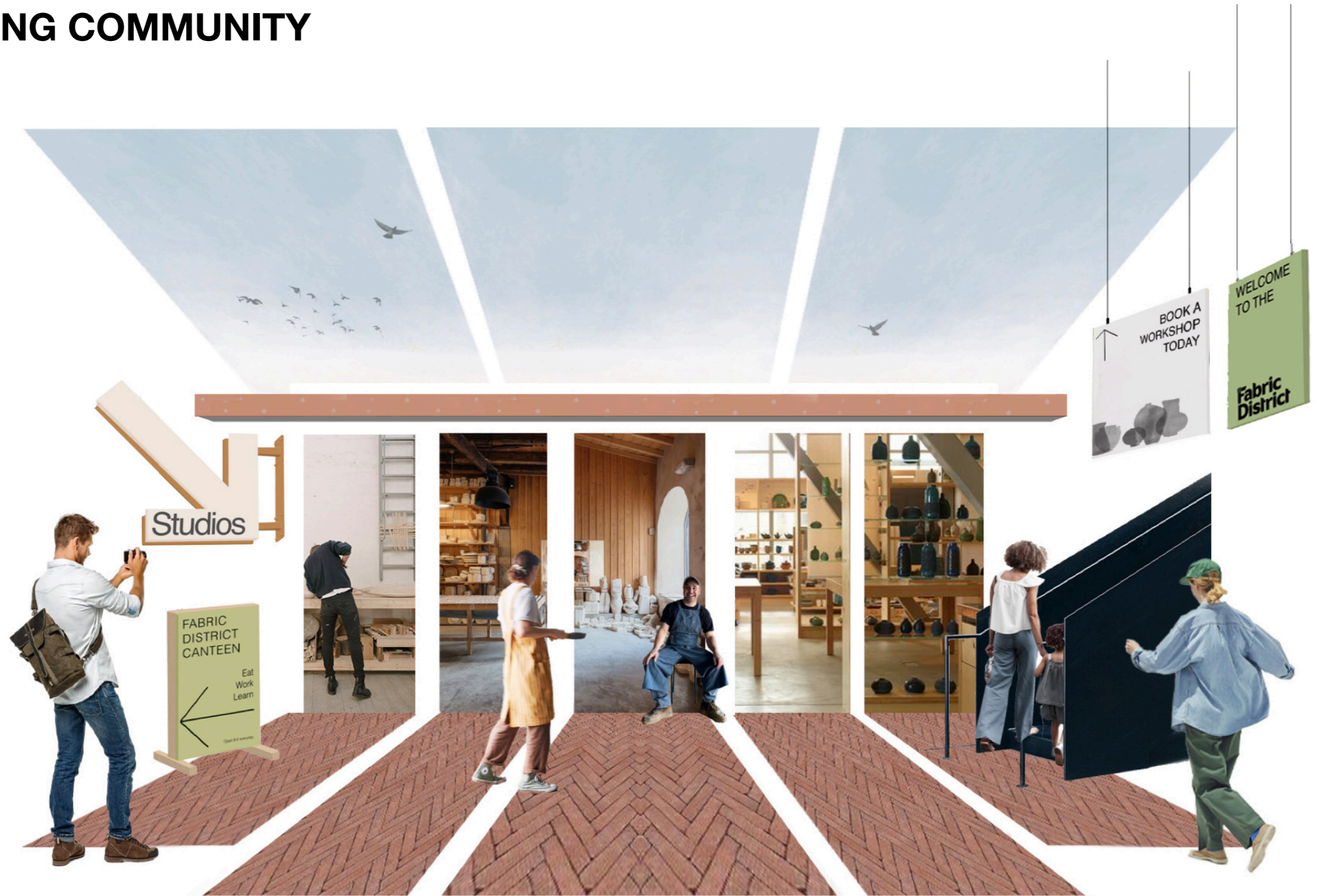
FOOD HALL



GALLERY



# BUILDING COMMUNITY



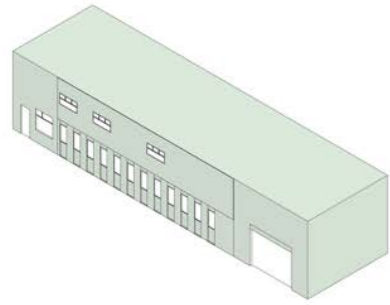
**EXTERNAL YARD ACTS AS BREAK OUT SPACE FOR DINING HALL, PRODUCTION AND WORKSHOPS**

VISUAL CONNECTION BETWEEN PUBLIC + PRIVATE / PRODUCTION + LEARNING

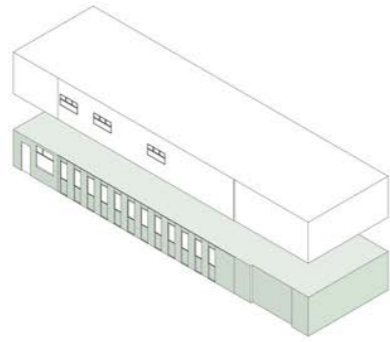
CREATES A BUSTLING ATMOSPHERE IN THE CENTRE OF THE SITE WHERE FUNCTIONS MEET

# ADAPTION OF EXISTING BUILDINGS

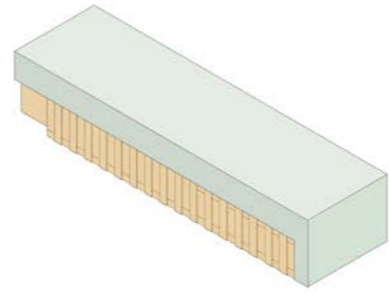
EAST



EXISTING LOAD BEARING WALLS

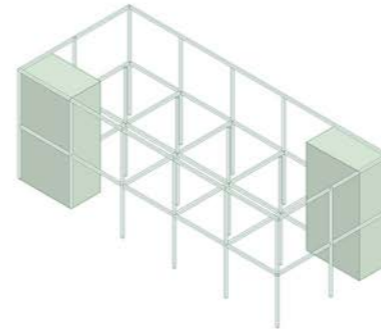


REMOVE FIRST FLOOR

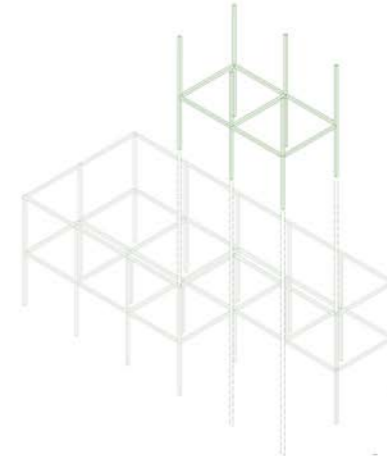


EXTEND 'COLONNADE' + MAKE SOME WINDOWS AND SOME SOLID BAYS  
ENSURE LINTEL STAYS INTACT

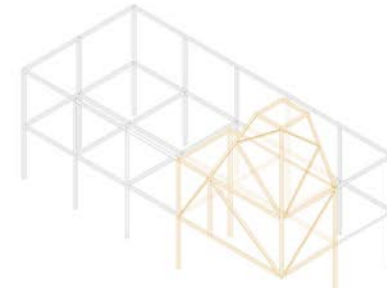
WEST



EXISTING CONCRETE FRAME  
KEEP EXISTING CORES IN SAME LOCATION FOR STRUCTURAL SUPPORT

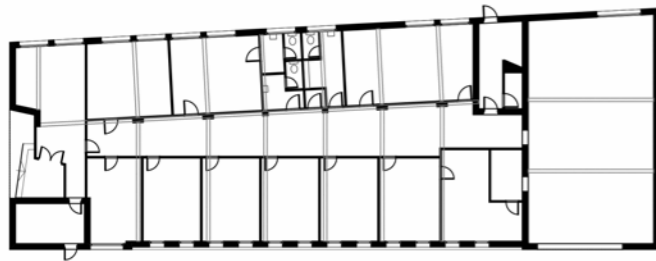


REMOVING TWO STRUCTURAL BAYS



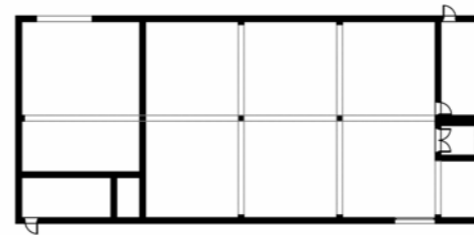
BUILDING NEW ELEMENT WITHIN THESE BAYS

STRUCTURE SITS INDEPENDENTLY



LOAD BEARING WALLS

EXISTING



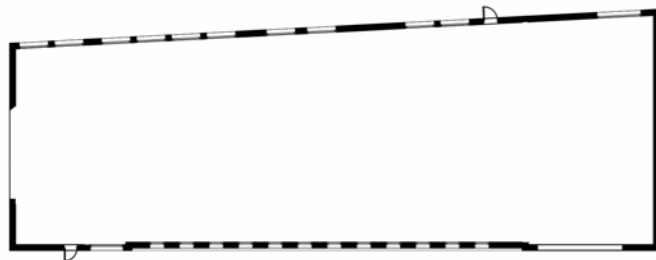
CONCRETE FRAME



PROPOSED CHANGES

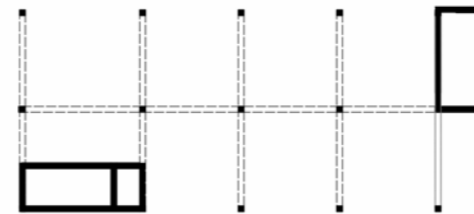


EXISTING

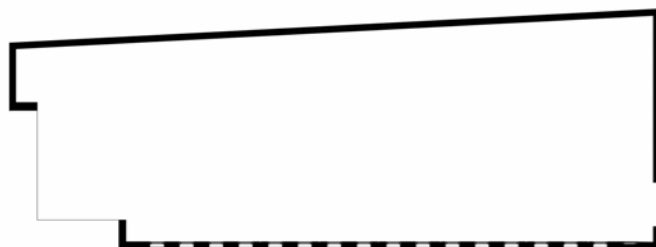


REMOVE PARTITION WALLS

DEMOLISH



STRIP FRAME, KEEPING CORES IN PLACE



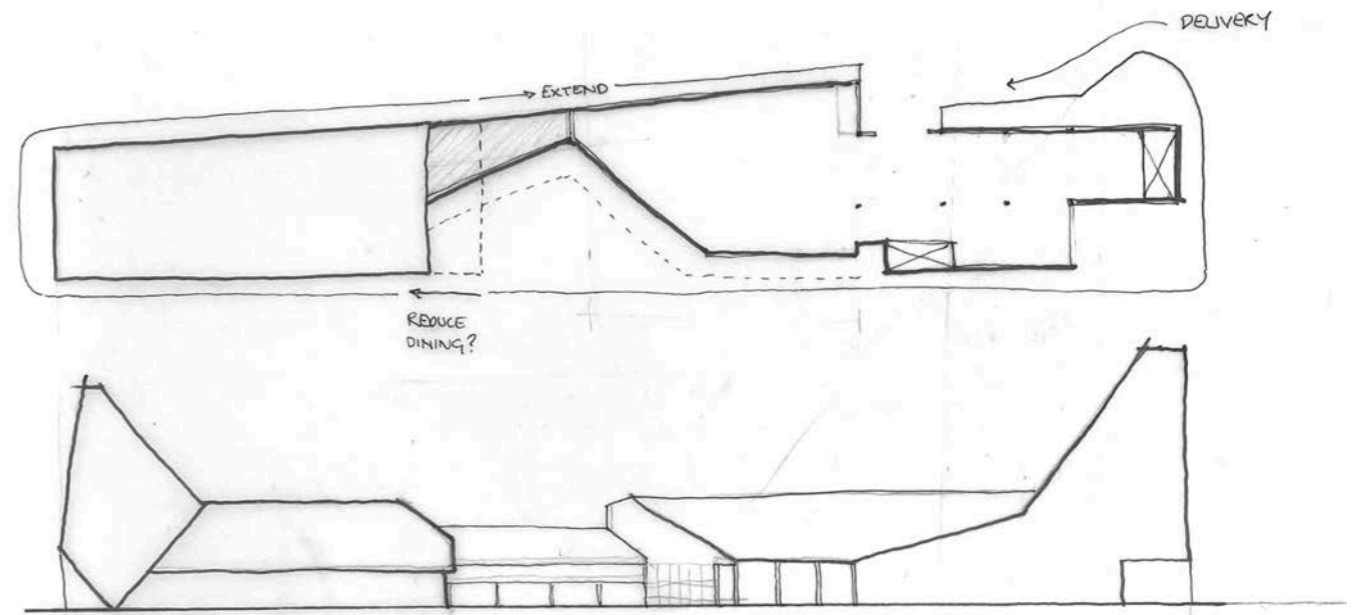
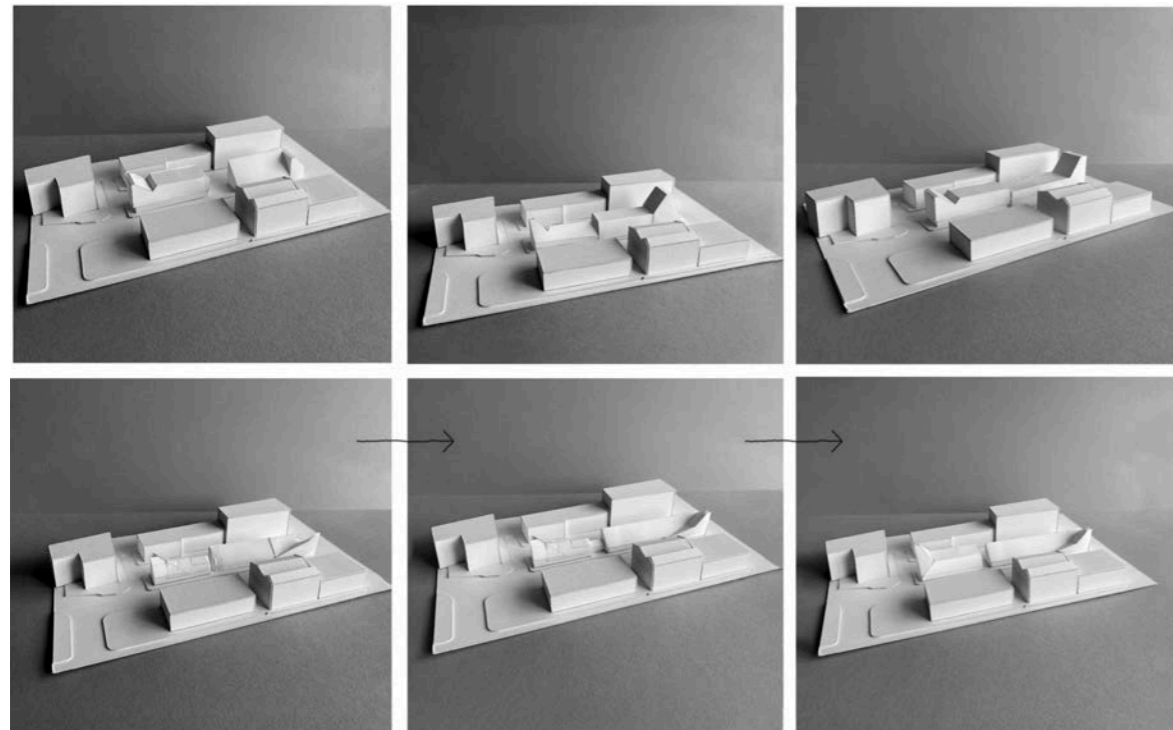
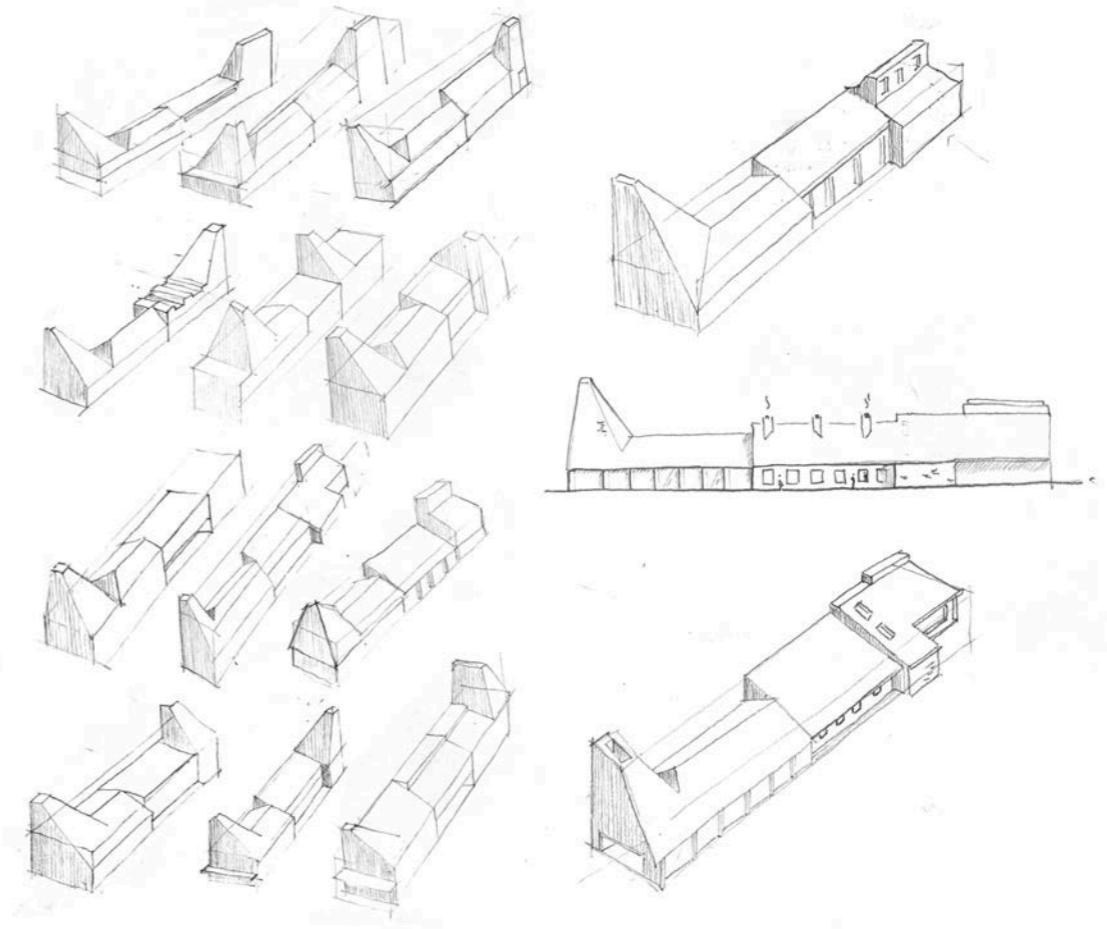
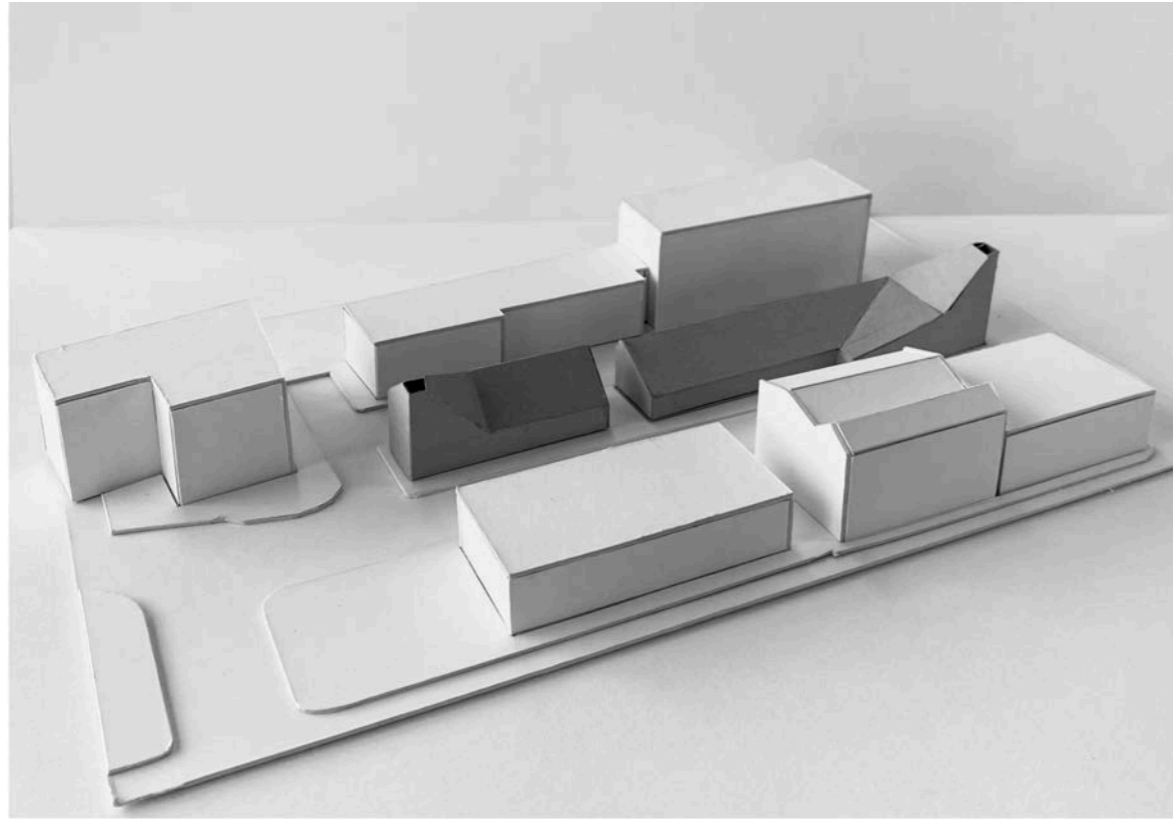
EXTEND COLLONNADE, MODIFY WINDOW PLACEMENT

ADAPT

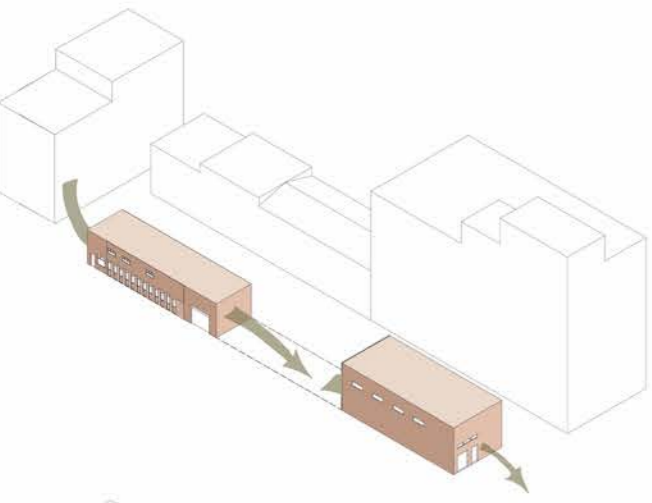


EXTEND FRAME, REMOVE ONE BAY

# MASSING DEVELOPMENT

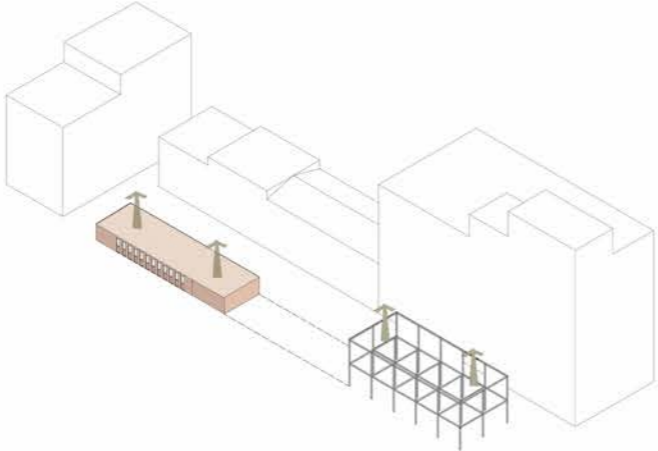


# MASSING DEVELOPMENT



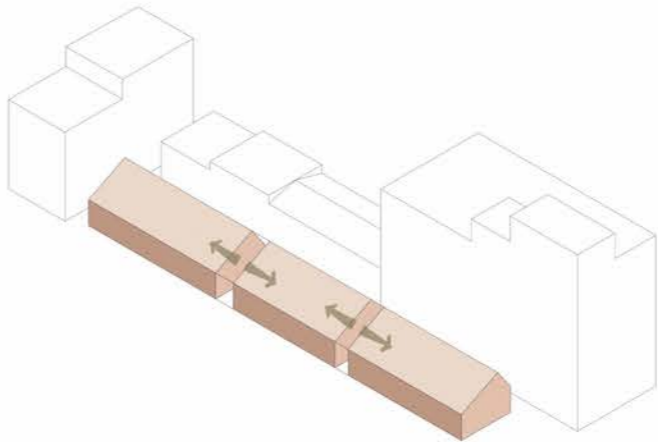
## CREATE URBAN ROUTE

BOOKEND ENTRANCES



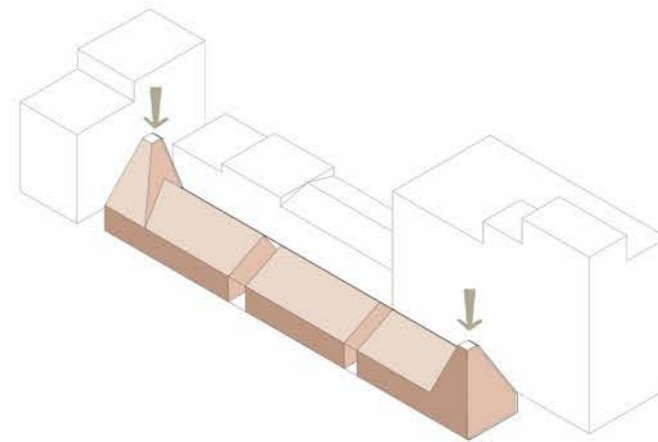
## MODIFY EXISTING

REMOVE FIRST FLOOR (EAST)  
+ SKIN (WEST)



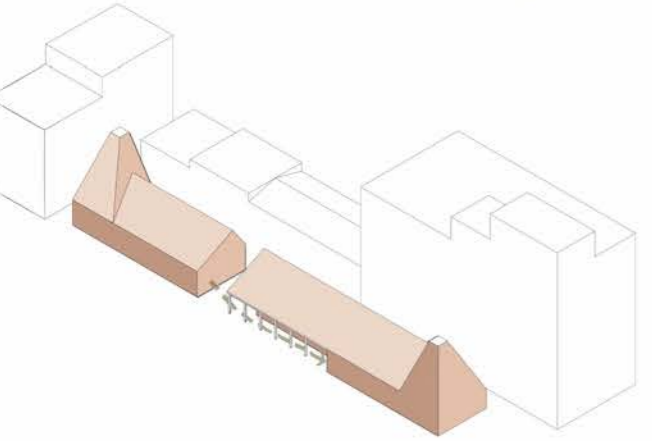
## SPLIT INTO THREE MASSES

PUBLIC, PRODUCTION + PRIVATE



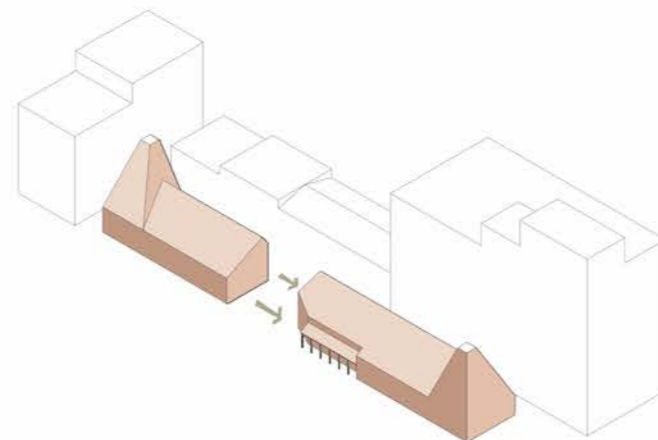
## ADD KILN FORM

OPPOSITE SIDES



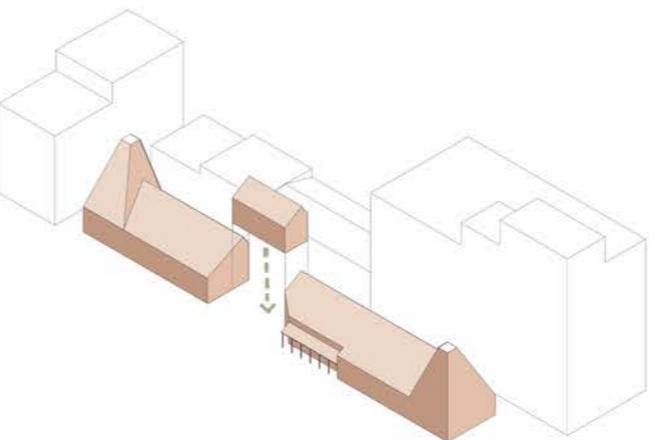
## REPEAT COLONNADE LANGUAGE

ENHANCES URBAN ROUTE AND CREATES  
VIEW INTO PRODUCTION



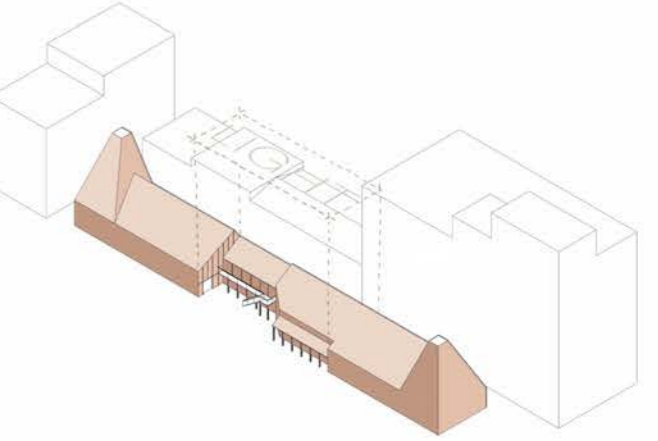
## CHAMFER SIDE OF PRODUCTION

OPENS OUT YARD SPACE, CREATING A  
MORE DYNAMIC SPACE + VIEW OF  
PRODUCTION



## ADD PUBLIC WORKSHOPS

MIMIC TRADITIONAL CERAMIC  
WORKSHOPS CREATE VIEWS INTO  
KILN ROOM BELOW



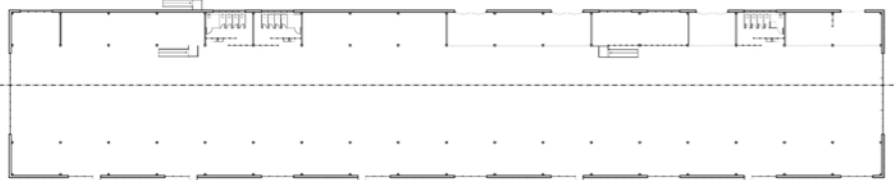
## HEAVY VS LIGHT

FILIGREE DETAIL ENHANCES  
HEAVY BOOKEND FORMS

# PRECEDENT - VITSOE FACTORY

WAUGH THISTLETON ARCHITECTS

- OPEN FRAME
- SPACES DICTATED BY COLUMNS
- LIGHT AND AIRY
- A LOT OF SPACE

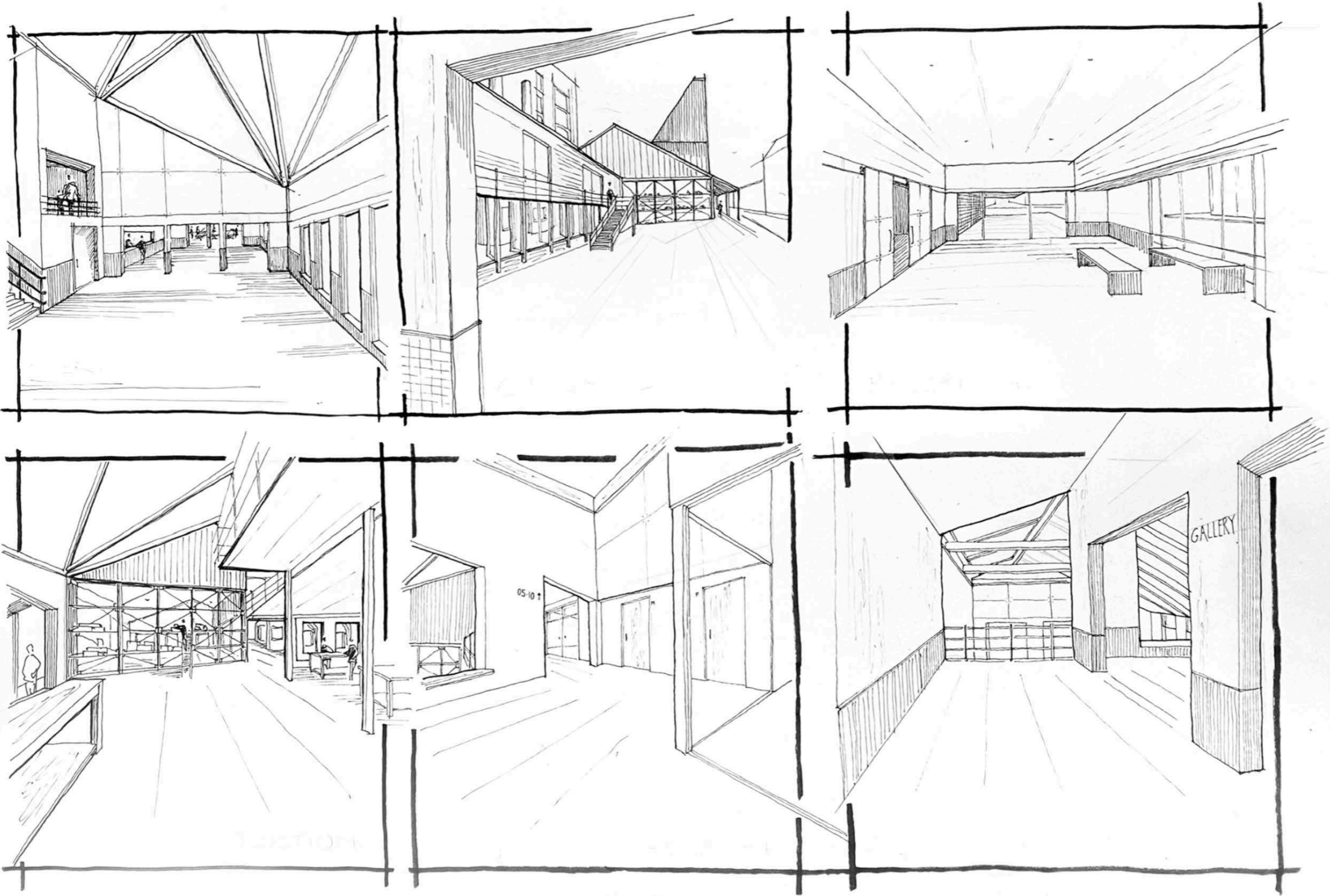


VITSOE PLAN; OPEN FRAME EXPRESSED CLEARLY

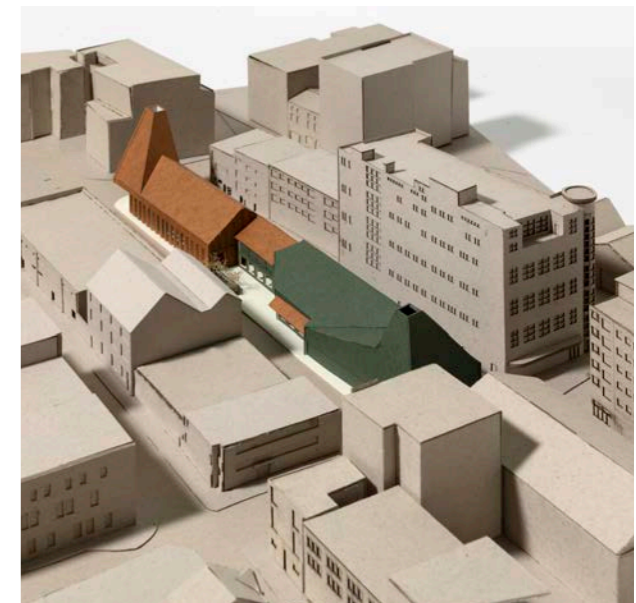
APPLICATION TO DESIGN - PRODUCTION YARD DIVIDED INTO MANUFACTURE STAGES BY TIMBER FRAME.



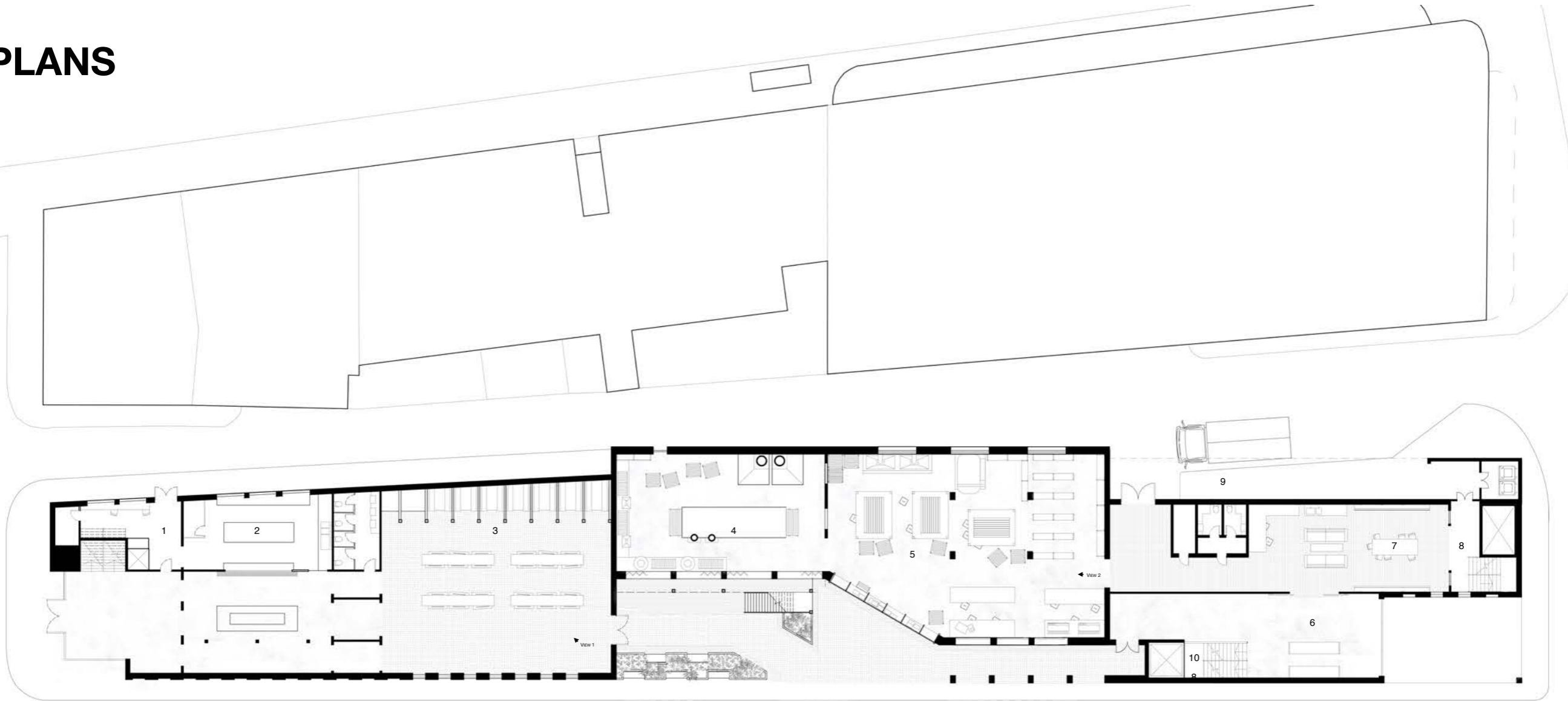
# VISUALISING INTERIOR SPACES



# SITE OVERVIEW - 1:200 MODEL



# PLANS



## GROUND FLOOR PLAN

1:200 @ A2

0 1 2 5m



1 MANAGERS OFFICE

2 KITCHEN

3 FOOD HALL

4 KILN ROOM

5 PRODUCTION WORKSHOP

6 RECEPTION  
(BOOKING WORKSHOPS AND PRODUCTION INQUIRIES)

7 STAFF ROOM / MEETING ROOM

8 PRIVATE CORE (WITH FIRE SHUTTER)

9 COVERED DELIVERY BAY

10 PUBLIC CORE

# DINING HALL - 1:50 MODEL



INCREASE PITCH OF ROOF, MAKE MORE DRAMATIC

REPLACE QUARRY TILE WITH OLD BRICKS FROM EXISTING

INCLUDE COLUMNS DOWN FROM TRUSS

**DINING HALL** VIEW 1

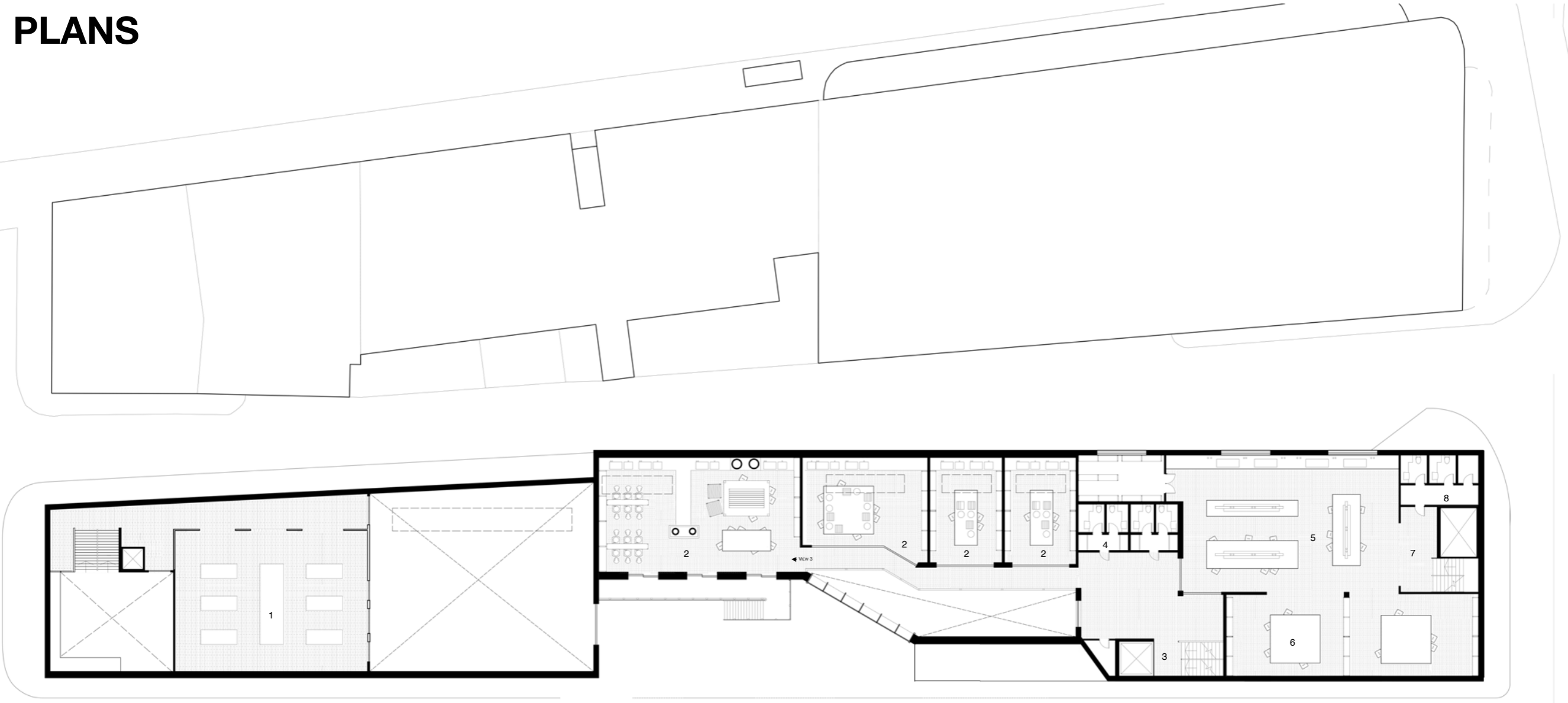


# PRODUCTION WORKSHOP

VIEW 2

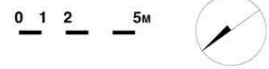


# PLANS



## FIRST FLOOR PLAN

1:200 @ A2

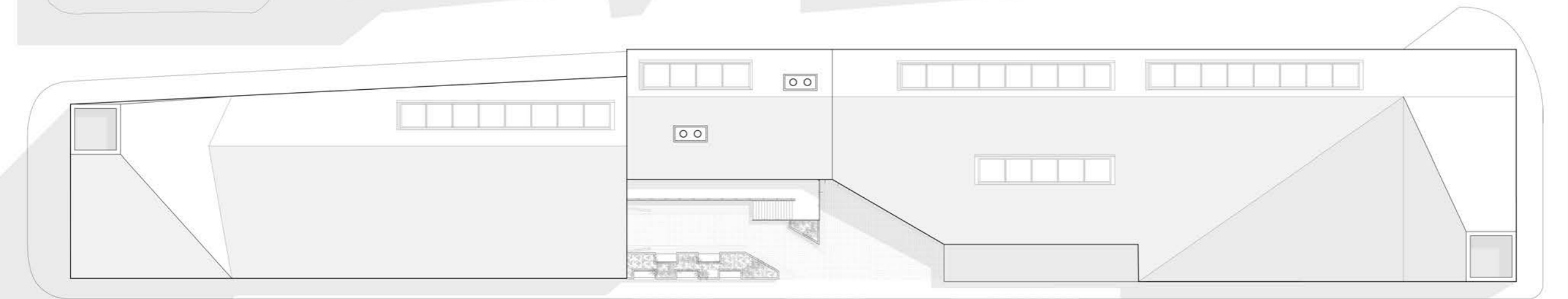
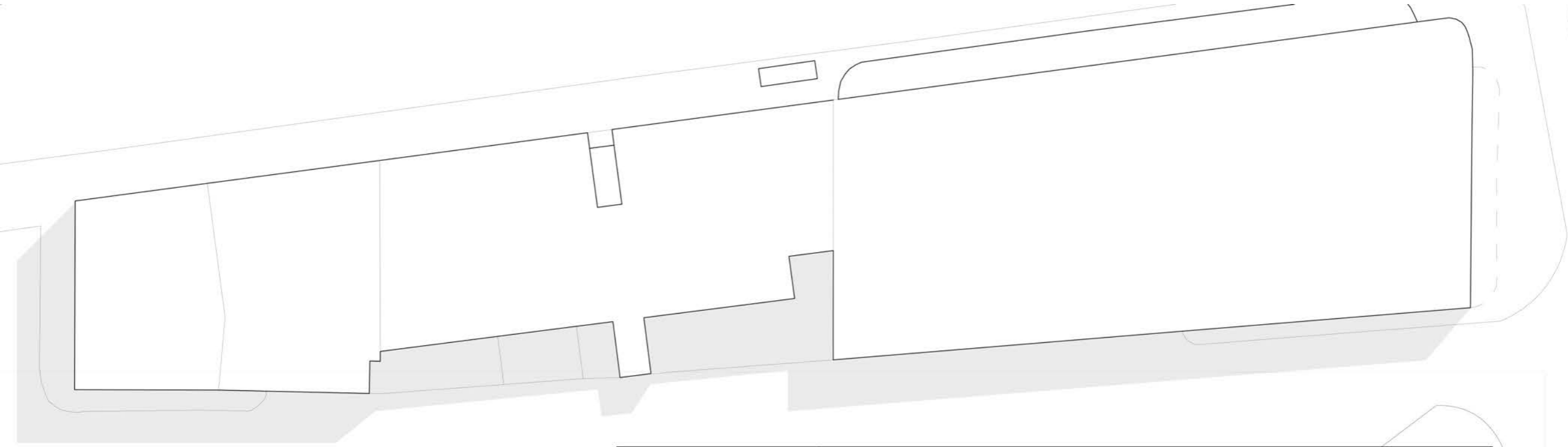


- 1 GALLERY
- 2 PUBLIC WORKSHOP
- 3 PUBLIC CORE
- 4 TOILETS
- 5 LABORATORY
- 6 DESIGN STUDIO
- 7 PRIVATE CORE (WITH FIRE SHUTTER)
- 8 TOILETS

# PUBLIC WORKSHOP VIEW 3



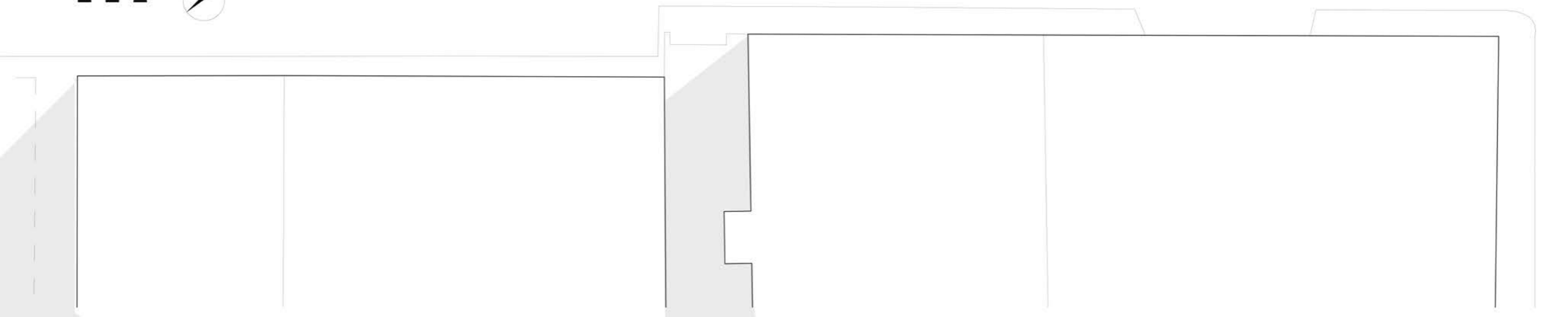
# PLANS



ROOF PLAN

1:200 @ A2

0 1 2 5M



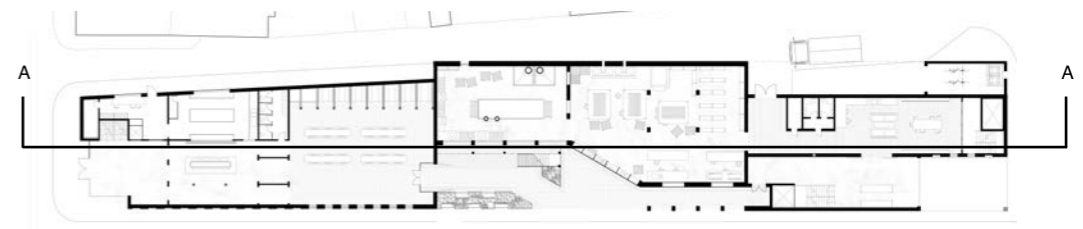
# SECTION



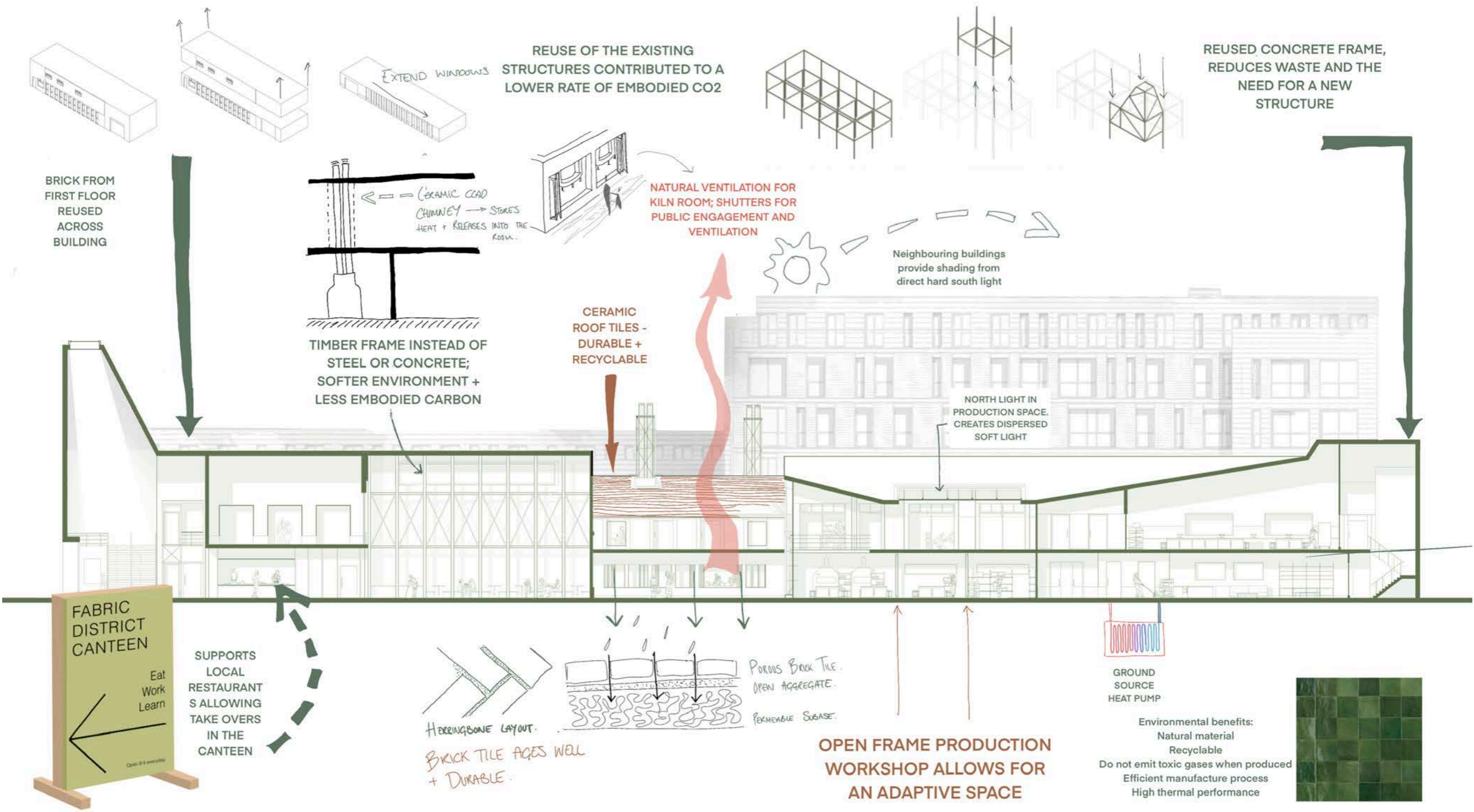
SECTION AA

1:200 @ A2

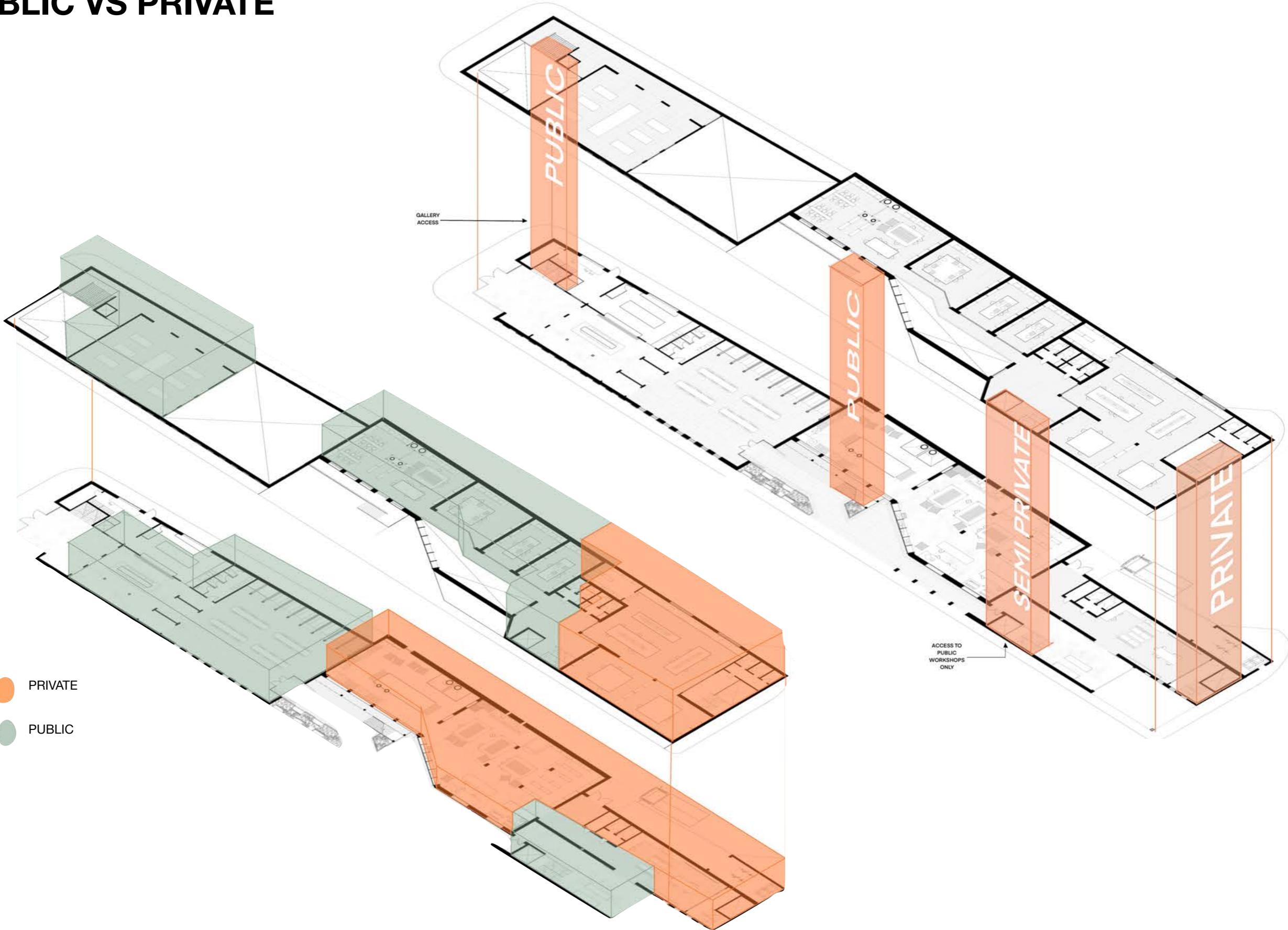
0 1 2 5M



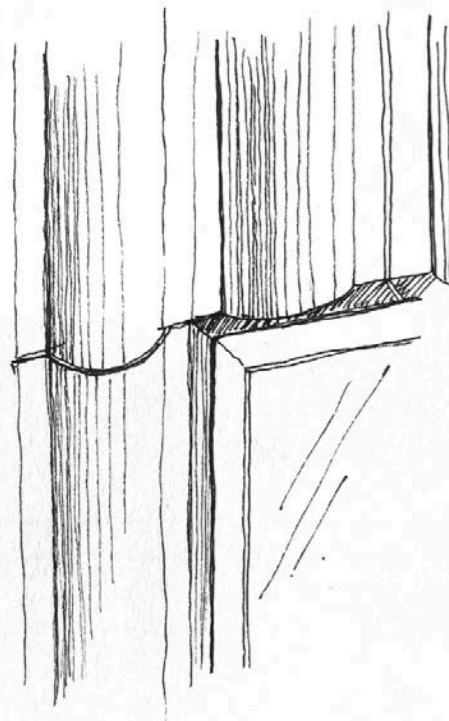
# ENVIRONMENTAL STRATEGY



# PUBLIC VS PRIVATE



# FACADE DEVELOPMENT



**UNGLAZED - RUSTED COLOURING  
PERCEIVED AS CORRUGATED METAL**



**1:10 MODEL**

**EACH SHINGLE IS  
400MM X 400MM**

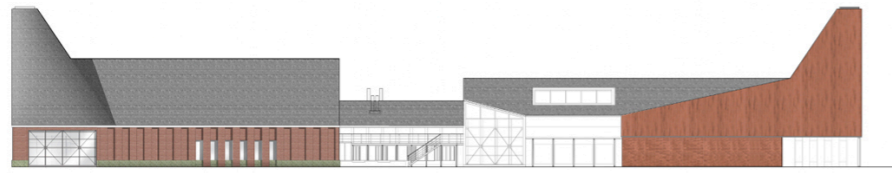


**OVERLAPPED AT 2700MM**



**DEEP WINDOW REVEALS - TILES FLUSH  
- COVER STRUCTURE**

# MATERIALITY EXPERIMENTS

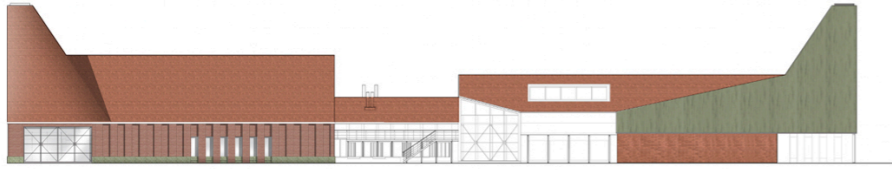


USING PHOTOSHOP TO EXPERIMENT WITH MATERIAL COLOURS AND TEXTURES.

GREEN - CORRUGATED CERAMIC TILE

ROOF - CERAMIC TILE

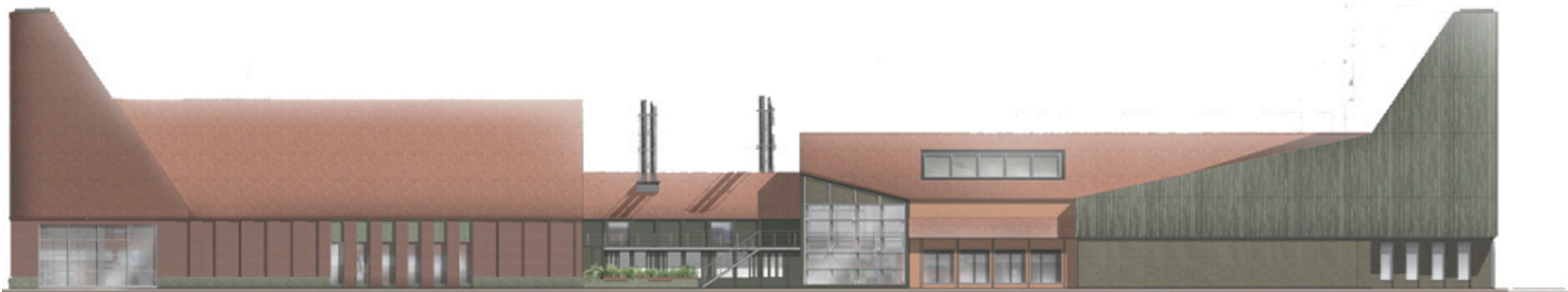
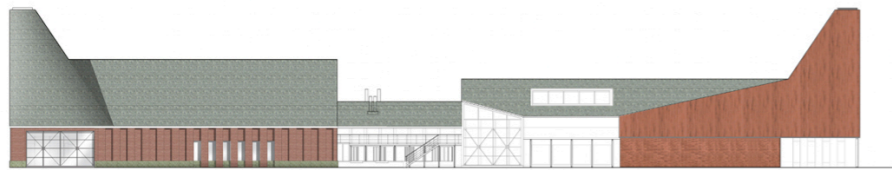
BRICK - EXISTING BRICK FROM SITE



THE BOTTOM IMAGE SHOWS THE FINAL DESIGN. THE RIGHT FORM HAS BEEN MADE ENTIRELY GREEN TO ENHANCE THE DIVIDE BETWEEN THE THREE FORMS



THE CENTRAL FORM HAS A MIXTURE OF COLOURS TO TRY AND BLEND THE OUTER ELEMENTS



**SINUSOIDAL CERAMIC TILE**

EACH TILE  
1000MM X 1000MM

EACH CORRUGATION 1  
50MM X 250MM



**CERAMIC TILE**

VARYING FINISHES  
HOMEMADE FEEL



**TERRACOTTA ROOF TILE**

GREEN AND ORANGE  
SHINGLED  
EACH TILE 350MM X 200MM



**BRICK TILE**

HERRINGBONE + RUNNING  
BOND ARRANGEMENT



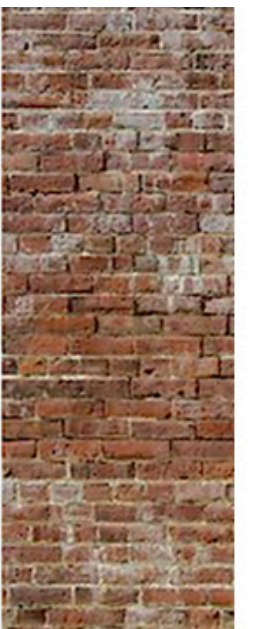
**VIROC**

CEMENT BONDED  
PARTICLE BOARD  
1250MM X 2600MM  
PANELS



**VIROC**

CEMENT BONDED  
PARTICLE BOARD  
1250MM X 2600MM  
PANELS



**EXISTING BRICK**

CLEANED

# FINAL ELEVATION



0 1 2 5M



*WORKING LEFT TO RIGHT*

TERRACOTTA TILE ROOF

EXISTING BRICK FACADE WITH GREEN CERAMIC DATUM LINE

GREEN AND ORANGE STAINED VIROC PANELLING

GREEN CERAMIC TILE, VARYING EFFECTS

CORRUGATED CERAMIC TILE

# FINAL ELEVATIONS



0 2 4 6 8 10

BAYHORSE LANE

1:200 @ A2

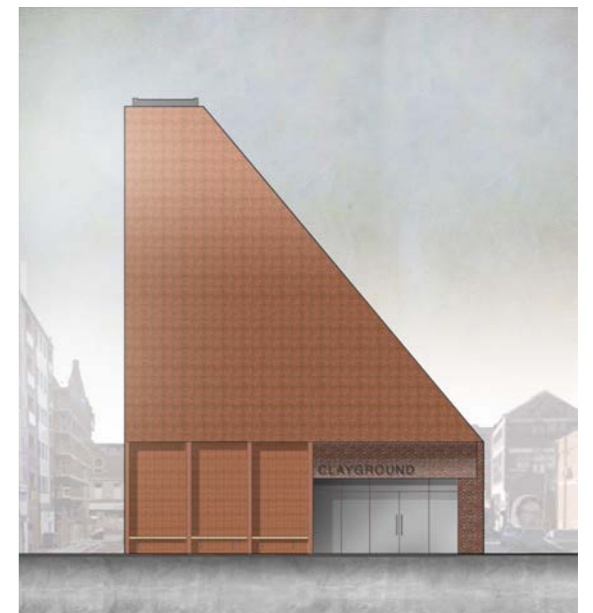


GILDART STREET ELEVATION

1:200 @ A2



NOT TO SCALE



FALKLAND STREET ELEVATION

1:200 @ A2

# TECHNICAL DETAIL

## SECTION DETAIL

1:20 @ A1



1  
FINISHED FLOORING; BRICK TILE  
SCREED  
100 MM CONCRETE FLOOR CAST IN SITU WITH REINFORCEI  
100MM RIGID FLOOR INSULATION  
DAMP PROOF MEMBRANE LAID ON SAND BLINDING  
THICKENED CONCRETE SLAB  
CONCRETE GROUND BEAM  
PILE

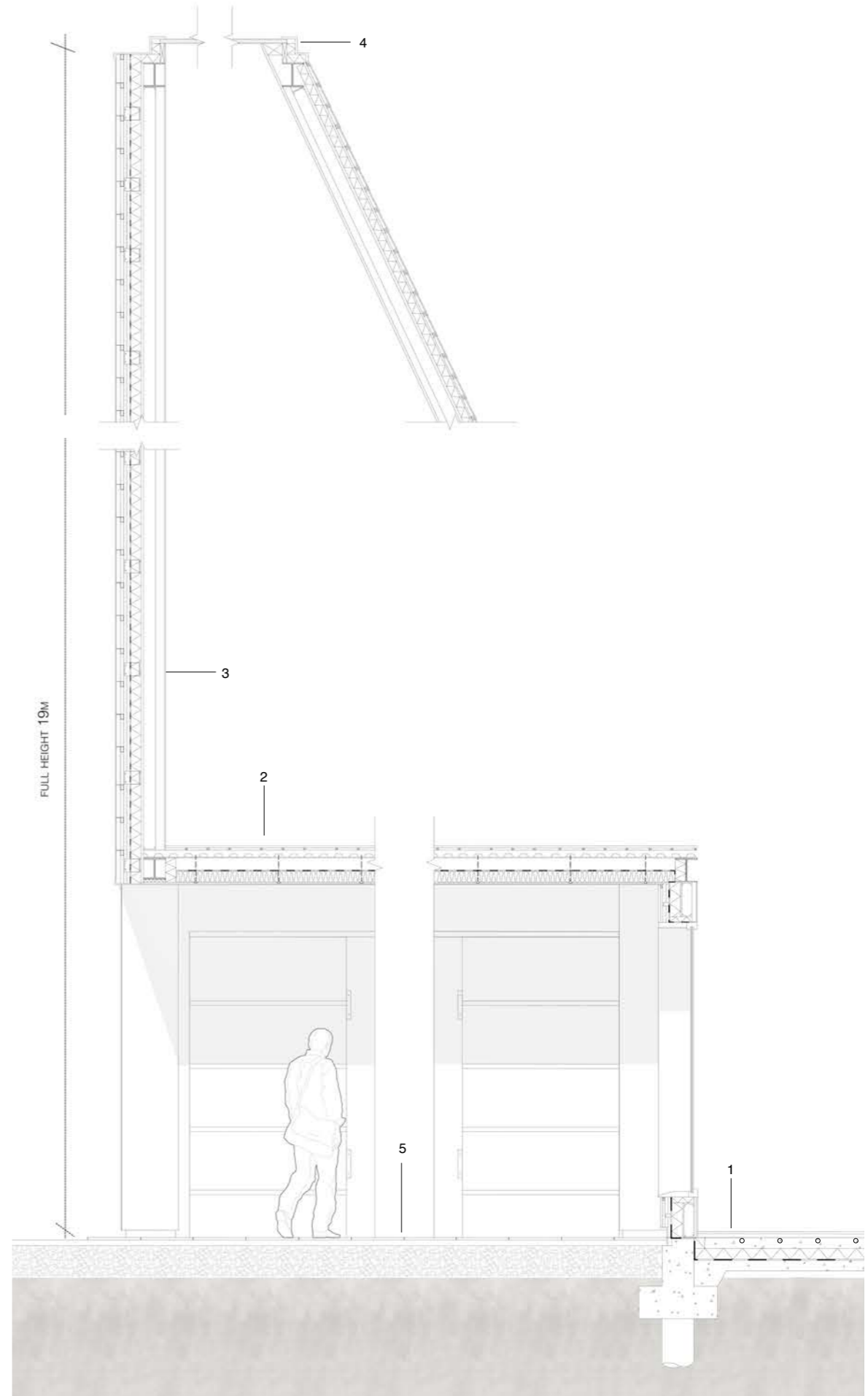
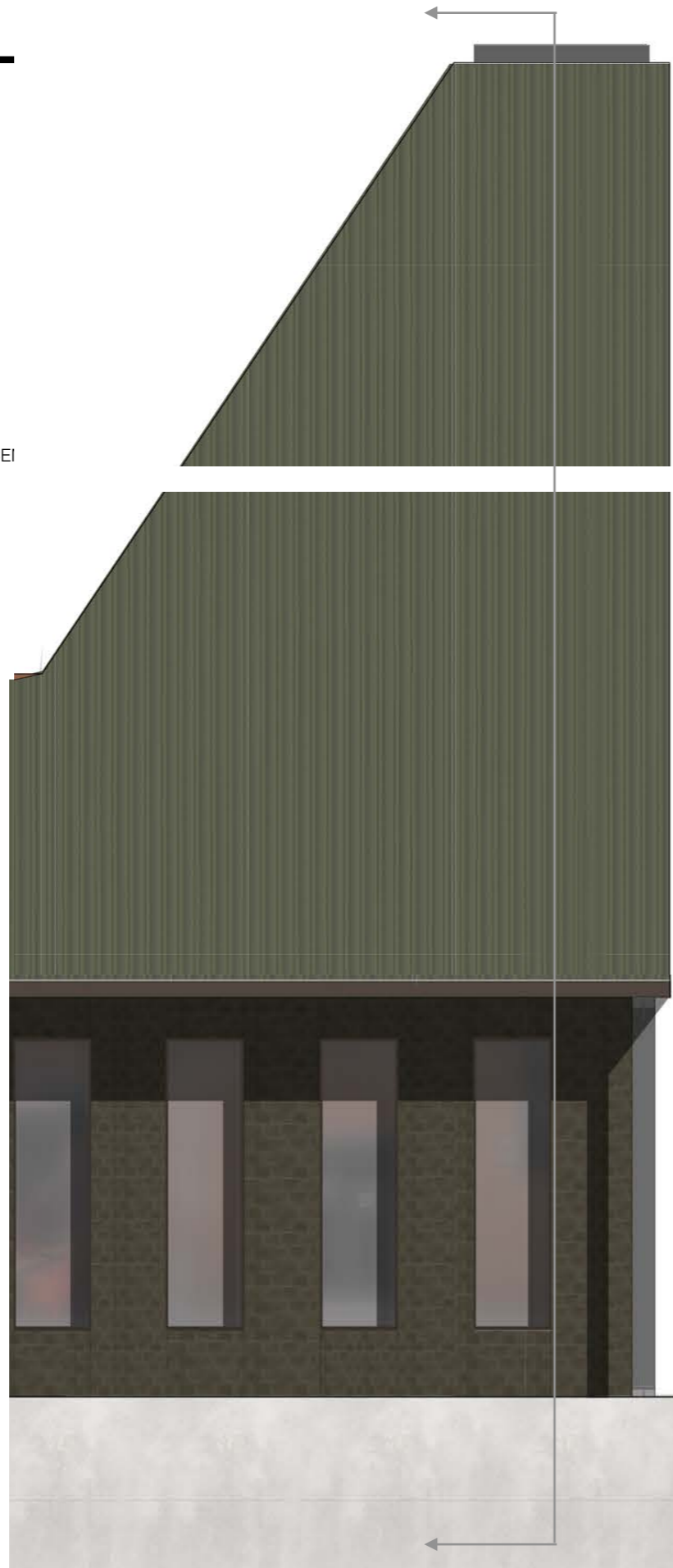
2  
TIMBER FLOORING  
FLOORING BATTENS  
SCREED  
CORRUGATED STEEL FLOOR PLATE  
CONCRETE EXISTING FRAME  
DPM  
100MM ROCKWOOL INSULATION  
CEILING HANGER  
SOFFIT

3  
10MM PLYWOOD  
TIMBER STUDS  
STRUCTURAL FRAMING SYSTEM  
SPACED AT 450MM CENTRES WITH INSULATION BETWEEN  
25MM FIBRE CEMENT BOARD (SHEATHING)  
100MM HARD INSULATION  
WATERPROOF MEMBRANE  
CAVITY  
STEEL SUB FRAME  
CORRUGATED CERAMIC CLADDING

4  
ZINC FLASHING  
HARD INSUALTION  
TIMBER STUD  
PLYWOOD  
(GLAZING ABOVE)

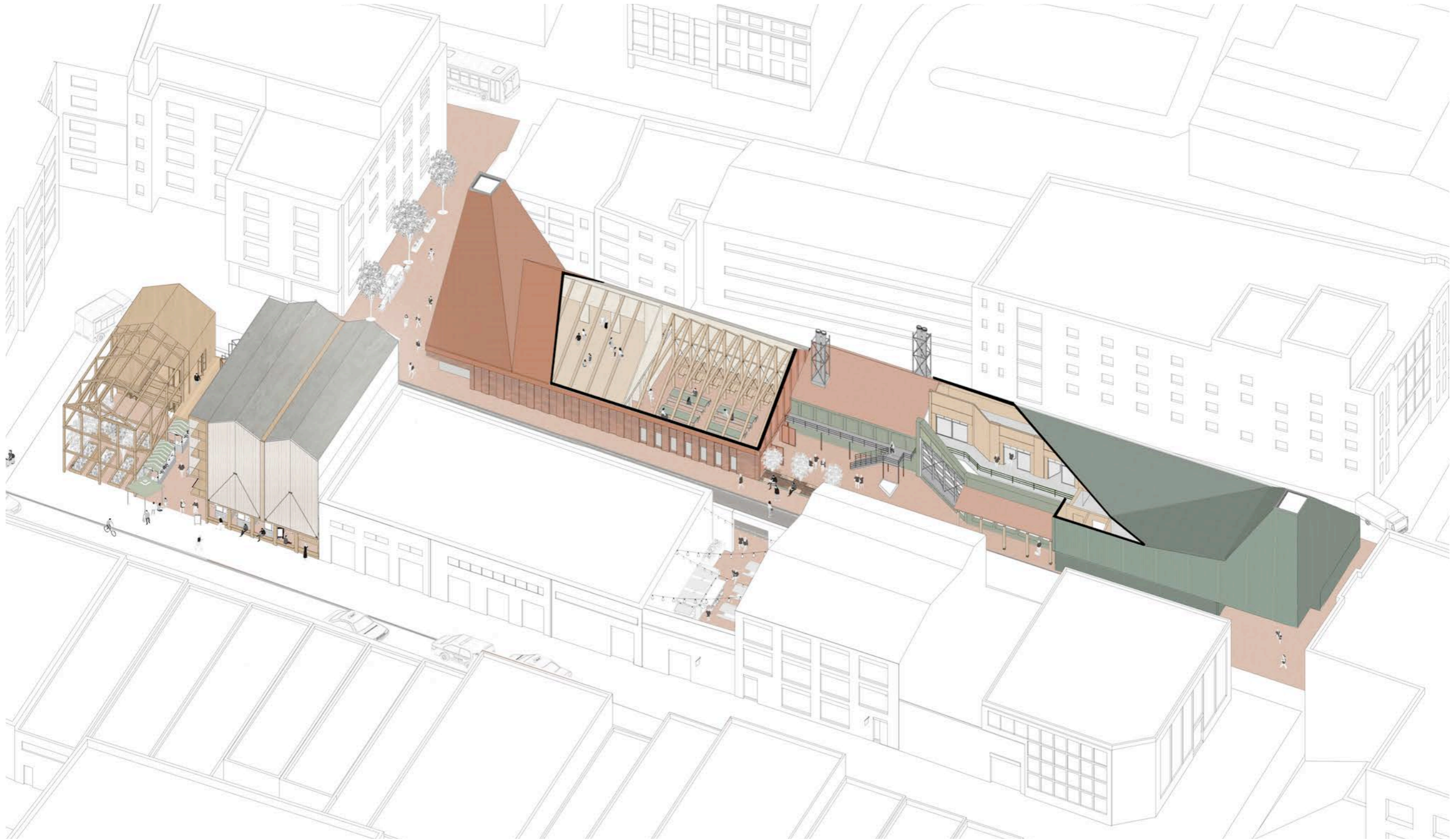
5 TERRACOTTA TILE PAVING (PERMEABLE)  
OPEN GRADE AGGREGATE  
PERMEABLE SUB BASE

STUDIO NOW



# SITE OVERVIEW

SEMESTER 1 + 2



NEW PUBLIC REALM

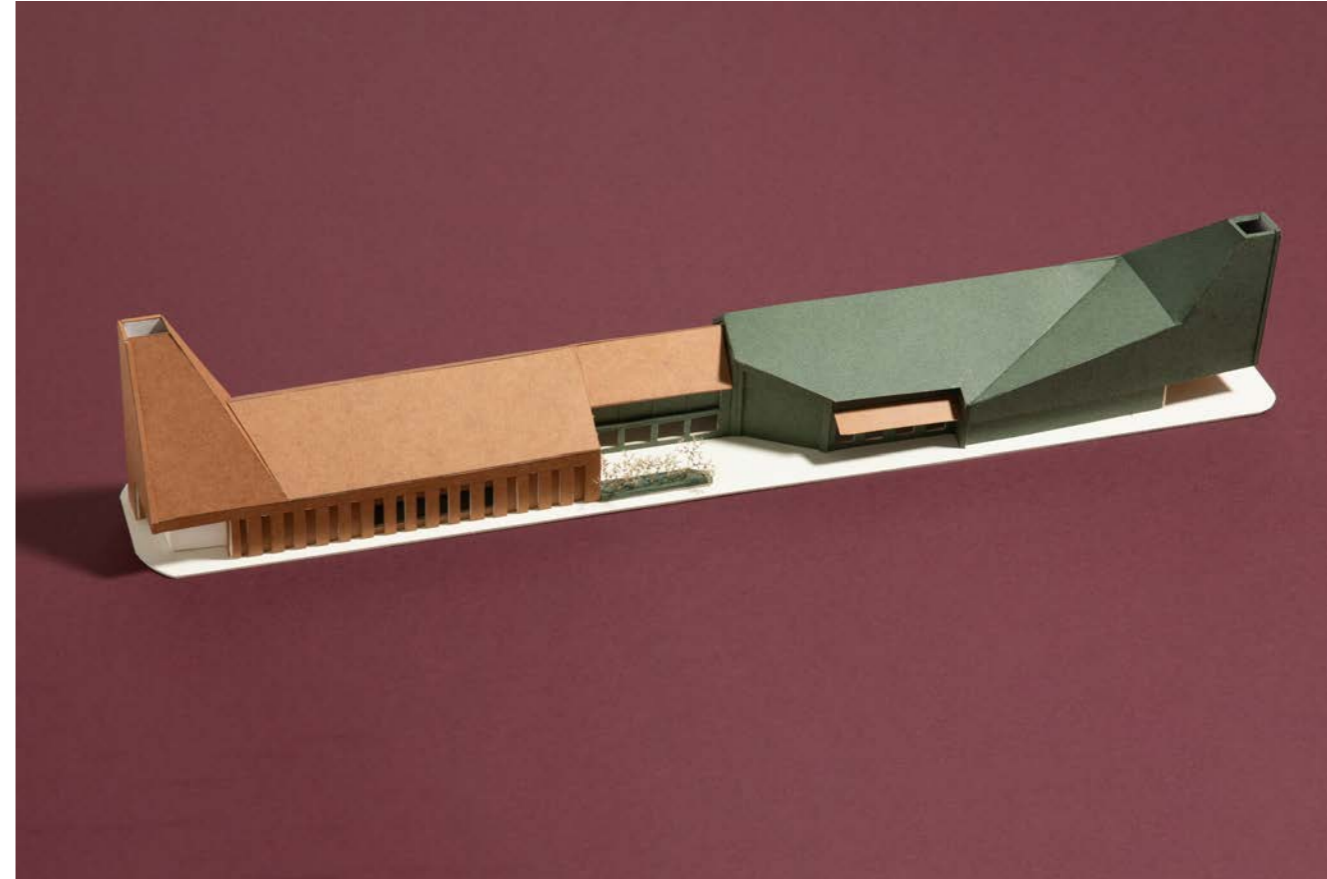
ADDRESSES CONTEXT AND REACTIVATES SPACES

COMMUNITY MARKET

# MODELS



1:50, 1:500 + 1:200



1:200

# EXTERIOR PERSPECTIVE

VIEW 5



# NEW PUBLIC REALM

VIEW FROM SEMESTER 1 SITE

